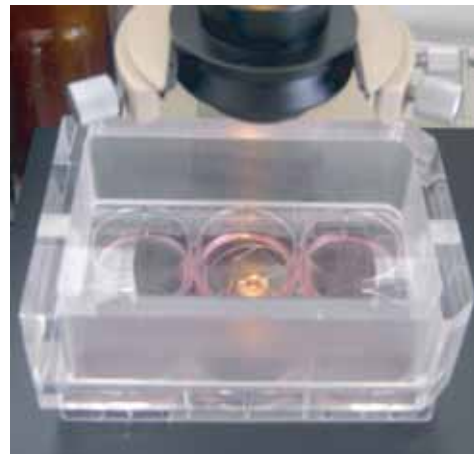
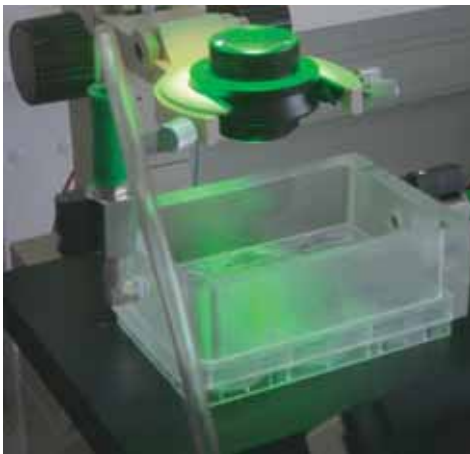


LittleSens

Mini incubator for microscopy



Specifications

- Aging & U.V resistant
- Rigidity and chemical resistance
- Optical transparency
- Suitable for most common inverted microscopes

Applications

- Adjustable on cell culture plates
- Prolongation of cell viability
- Sample maintenance in physiological conditions during observation
- Utilisation of modified atmospheres, hypoxic gas mixture and volatile compounds
- Tissue culture transportation